



THE ROOSTER

Roos Village Newsletter

No.2

September 1985

PARISH COUNCIL MATTERS

Councillor K.G. Grant was in the Chair at the monthly meeting of 12th August in the Memorial Institute. Apologies for absence were received from Councillors J.R. Clark, T.K. Cook and J.D. Quarmby.

After approval of the Minutes of the Meeting of 8th July, it was noted that the Borough Council had approved a planning application - with amended details - for the erection of a dwelling at the corner of Chestnut Garth.

ROOS SCHOOL AND GOVERNING BODIES

The official capacity of Roos School is 90 pupils. The information was contained in a letter from the Director of Education after a query from the Parish Clerk, Mr. C. Woodhouse. The Council went on to consider the machinery by which local councils are represented on the governing bodies of schools.

RURAL VOICE

'Rural Voice' is published monthly by the Community Council for Humberside. So far it has been funded by the Development Commission and circulated as a free issue. Councillors were told that the funding would cease in December and their advice was sought about the future of the publication: how frequently it should be printed and what would be an acceptable rate of subscription. Councillors confessed themselves inadequately aware of 'Rural Voice' and deferred completion of a questionnaire for further consideration.

OTHER CORRESPONDENCE

Information had been received about National Tree Week 1985. The aim is to encourage the planting of small wooded areas to enhance the countryside. It was agreed to display the information on the Parish Notice Board.

The Council received the Hull Area Housing Report for 1984 and notice of the London Conference of the National Playing Fields Association. There was an appeal from the Lord Mayor of Hull to support 'Humberside Helping Hand' for African Aid and the variety show in the City Hall.

Humberside would be included in the first phase of a draft revision by the Local Government Boundary Commission.

PUBLICITY AND THE NEWSLETTER

At the last Parish Meeting the question had been raised of providing more publicity for Parish Council Meetings. Councillors felt that normal meetings were adequately publicised: everyone knew that meetings were held on the second Monday of each month. However, an annual notice showing the dates for the whole year might be useful.

Possibly special posters for Parish Meetings might be useful since it was desirable to encourage residents to attend and take part in such open meetings.

Councillor M. Cheeseman felt that publicity for Parish Council matters was not helped by the position of the Parish Notice Board. It was in the wrong place and too high for many people to read notices easily. If it could be arranged, the notice board would be better placed on the wall of the post office.

As to the Newsletter, most Councillors agreed that, in the interests of topicality, it should appear once a month and agreed to make a grant to cover the cost of materials for the next six months.

THE VILLAGE PLAN

Councillors discussed a draft questionnaire that had been submitted for their comments by the Holderness Planning Officer. Subject to their approval the questionnaire was to be circulated to every household in the village.

Councillor J.C. Priest thought the questionnaire a good one. It would establish essential facts and areas of local concern in preparation for the public meeting expected in the New Year.

Other Councillors thought the questionnaire too slight and un-specific. It might prove too general to stimulate much public response.

One question concerned the locality where the head of household was employed. Councillors thought that the question should be asked of all residents who were in employment: it would be useful to know how many people went out of the village to work.

PLANNING APPLICATIONS

At a previous meeting Mr. W. Biglin of The Chestnuts, Rectory Road, had submitted an outline application to build houses on his land. The Council had asked for more details. Councillors noted that in his revised application some trees would need to be felled to accommodate the four houses proposed. Access to the site would be by a road just north of Dove Lane.

A number of letters had been sent by local residents to the Planning Authority. Objections to the development included allegations that there was no local need for such housing, that access would be poor, that there would be a loss of outlook, that Dove Lane would be spoilt, that the land would be unsuitable for building, and that there would be an increase of traffic down Lamb Lane.

Councillors shared some of these reservations. They felt that the application was still lacking in essential detail - for example, as to which trees were to be felled. They voted not to approve the application. They registered this decision by four votes to nil, the Chairman and one other Councillor abstaining.

Two other applications were discussed. Councillors approved an application by Mr. M.J. Jackson of Roos House, Main Street, for an extension at the rear of his premises, providing there were no objections from neighbours. They also approved an application to carry out alterations to Corner House, Main Street, providing that there was no adverse effect on the house next door: they had in mind a previous objection that the proposed alteration would cut off light to the neighbouring house.

PARISH MEETING

The Chairman referred to matters raised at the Parish Meeting of 8th July. He noted with regret that there had been no repairs started to footpaths in the village. At the Parish Meeting he had passed on - in good faith - assurances that repairs were imminent.

As to problems at South Park concerning further development there at a time when the existing road was still incomplete, it was known that County Councillor R.S. Croft had taken the matter up but there was as yet no news of any outcome.

The Council noted the intention of a group of local residents to start work on a Village Appraisal and looked forward to further information as to its progress.

KEEP FIT!/GET FIT?

Are you strong, supple, healthy - and attractive?

From Thursday, 26th September Keep Fit Classes will be held every Thursday in Roos School, from 7.30 to 9.00 p.m. These classes are part of the Withernsea Further Education programme.

The fee is £10.05 for each ten-week session. There are special rates for pensioners and the unemployed.

Come and join in the wide range of exercises - for your body's sake. Or just for enjoyment.

Christine Mitchell (70771)

BANK HOLIDAY FUN DAY

On Bank Holiday Monday, 26th August, the Playing Field Committee organised their Fun Day. After a week of rainy weather, the day was fine enough to allow a most successful programme of events. The comments that follow are based on notes supplied by the Playing Field Chairman, Mr. Stewart Wilson.

Six years ago, in August 1979, the Parish Council called a public meeting to announce that land was available to the rear of the new Roos School. The result was the formation of the Roos Playing Field Association.

Since then, a great deal of work has been done. Particularly at first, progress was slow. However, in view of the rough condition of the land at the start and the fact that it took four years to reach a leasing agreement from the County Council, the slow beginning was inevitable.

In the first place, a Constitution was drawn up defining the composition of the Committee. The object was to ensure representation for all interested organisations in the village.

At the same time the Committee successfully applied for registration as a charitable organisation and a long-term lease was eventually negotiated with the County Council.

Since its foundation the Association has raised several thousand pounds from a variety of activities and events. These have included coffee mornings, draws, dances, sponsored walks (the last one raised £146.45) and football busters. Not all were successful. One event best forgotten was a train trip to London which lost some of the funds previously earned.

Money raised has been spent on developing the field stage by stage. The first job was the clearing and levelling of the site, followed by the major task of draining. The land was sown - and then the grass needed regular cutting. So the next major expense was the purchase of a gang mower.

Now the stage has been reached where something can be seen for our efforts and the field is actually being used. Last year two soccer teams played from Roos and this coming season a Rugby League team will use the ground alongside the two soccer teams.

A Model Aeroplane Club has joined the Association and flies planes from the field. Plans are being made to lay a cricket square and to establish a play area for youngsters. Interest has also been shown in a Hockey section.

Our Association is now well established but there is a long way still to go. The more facilities we provide, the more maintenance will be required.

There is now an urgent need to establish permanent changing facilities for the use of all sections using the field. The rugby section have provided the muscle to lay a road to the playing area. The next stage will be to provide a car park.

As funds are raised, the facilities will be improved for the benefit of all sections of the community. The ultimate target is to establish sporting and recreational amenities for everyone in the area.

The Fun Day on Bank Holiday Monday was the most recent fund-raising effort. It was built around a Superstars type of competition which attracted six local teams, each comprising three men and one woman. For two hours these teams competed in a wide range of energetic activities.

Other attractions included archery, model aeroplanes, pony rides, and a chance to 'Drench a Wench' if you were capable of hitting a small target with a tennis ball. Stalls set around the sporting area included tombola, a bookstall, hot dogs, wheel of fortune, a tin-and-bottle stall, pop and crisps, a nearly-new stall, Beat the Goalie, and a sponsored sing.

The less energetic exercised themselves in the beer tent run by Pete Sedgewick of the Roos Arms, while outside Geoff Prest of the Black Horse organised a Welly-Slinging Competition and rounded off the afternoon's activities with a Tug-of-War, refereed (with some difficulty) by Andy Stevenson.

The support from the village was tremendous - from the early-morning workers who were setting things up at 8.00 a.m., the helpers on the stalls, the Brownies' sponsored sing, the 2nd Withernsea Scouts who provided succulent hot dogs, right through to the 753 recorded visitors who were admitted through the gate. The recorded admissions do not include children: total attendance must have been much higher.

Final details are incomplete of clear profit from the day but the Treasurer, Mr. Gordon Green, guesses that a sum significantly in excess of £800 will have been raised.

A similar event will certainly be held next year, a bigger and better one. Meanwhile, the Committee are well aware that this first venture, though very successful, could have been improved. Any criticisms or suggestions for the future will be welcome. Ring Stewart Wilson - Patrington 70570.

GOOD TO LOOK AT AND NICE TO HANDLE

In the August issue various optimistic ideas were aired about the future of the Newsletter, among them the possibility that it might be printed rather than duplicated. At the time I had no idea that the September issue would appear in a new format. I was gratified that the Parish Council were prepared to help with the cost of materials for a duplicated version for the next six months. Yet here we are already in a new and most appealing format.

Out of the blue came an amazing offer from a very recent newcomer to the village. After only two weeks in Roos, Martin Lunn, now living in South Park, offered to print the Newsletter free of charge as a gesture of support to our community life.

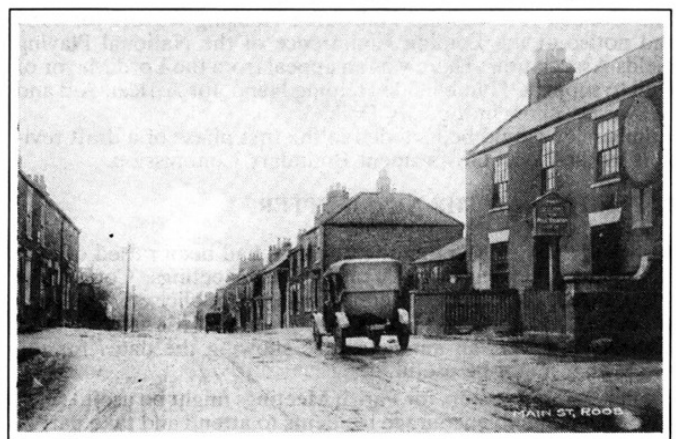
Martin, of course, runs the long-established firm, Messrs. A. E. Lunn, Printers, Seaside Road, Withernsea. A. E. Lunn was Martin's grandfather and founded the 'Holderness Gazette'. The paper was later run - among other interests - by Martin's father, Wilf Lunn, still very active in the Holderness business world.

The generosity of Martin's offer to print the Newsletter is staggering. It completely changes the scope of what can be attempted. Drawings and photographs can now be included. Technically, the Newsletter will benefit from new computerised typesetting equipment only a few weeks old. The quality of the product demonstrates the efficiency of modern printing technology.

Now that illustrations can be printed, where is the material to come from? Is there a keen amateur photographer who can provide a record of local places and events? Preferably prints should be in black and white, though this isn't essential.

For this issue we can delve into the archives. Some Roos people will know of the set of local views published as postcards by Mr. Harry Jubb. He was in business as a tailor and draper in premises almost directly opposite Mr. Hinch's shop. Mrs. Margaret Payne, his great-niece, has provided good copies of the cards. Her parents and she herself ran a confectionery business in the same shop premises. Can anyone suggest a date for these old views of Roos? Were they taken before or after the First World War?

L.H.



This view of the Roos Arms and Main Street looking south shows that even in the early days cars had a tendency to park outside pubs. Mrs. Payne thinks that the motorist refreshing himself inside was probably an ancestor of a family still resident in Roos. Any guesses?

Those of us who share the concern of the Parish Council Chairman about present footpaths may reflect that in these views the footpaths seem almost non-existent, while the roads are extremely filthy. Had they been surfaced at this time?

Opposite the Roos Arms was - and still is - the Post Office. Nowadays, in spite of its range of goods, the Spar Shop does not stock the wares shown hanging outside in the photograph. What was the shop two doors down? On the original the name over the windows appears to read 'Albert E. ...' something.



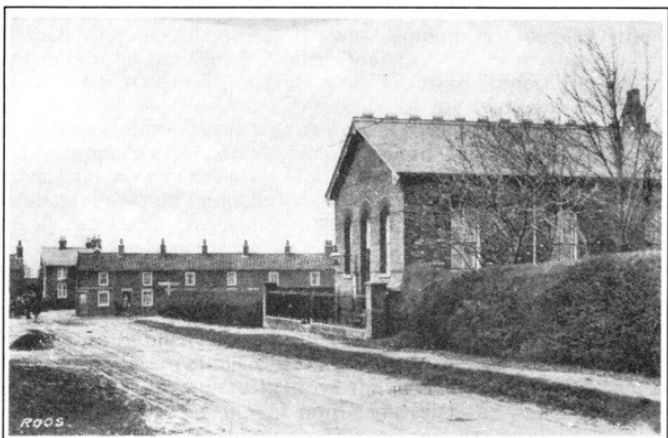
Post Office, Roos.

These old pictures remind us of changing patterns of life - and especially, in the next two photographs, of the decline in religious worship. In the first one, showing the Wesleyan Chapel, the date above the door is either 1905 or 1908. The building must have been used for worship for less than seventy years.



WESLEYAN CHAPEL, ROOS.

The other chapel, on Pilmar Lane, also fell into disuse. Its demolition permitted the development of housing on the corner.

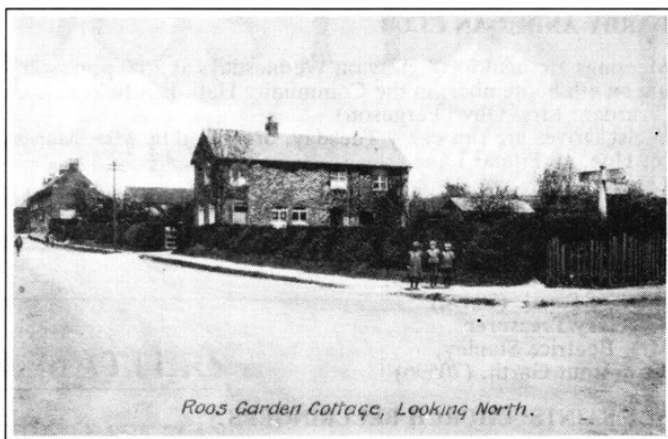


ROOS.

BRITISH LEGION STANDARD

The Roos Branch of the Royal British Legion is to lodge its old standard in All Saints', Roos. Following the necessary procedures to allow this, there will be a special ceremony at which the standard will be taken into the church. Date not yet decided.

The new housing also required the demolition of Mr. Fred Foster's house, Garden Cottage. These changes were fairly recent, of course. This part of Main Street certainly looks very different now.



Roos Garden Cottage, Looking North.

Of course, a community consists of more than mere buildings. It is what people do that gives life to a village. Football was played in Roos long before the coming of our Playing Field Association.



Many of these footballers are still around and kicking. Can you recognise any, whether still around or not? In alphabetical order there are:

Harry Bemrose, Harold Blenkin, Charlie Burn, Ken Burrell, 'Tubby' Eldred, Harry Everitt, Fred Foster, Ken Grant, Peter Grant, Harry Hinch, Fred Jeffs, Vic Lawson, Jim McCreaddie, Geoff Moverley, (?) Nimmo, Frank Robinson, Derek Summers and Ken Woodruff.

And what about these Brownies? Can anybody give us a list of them all - with married names where appropriate? No prizes!



Old photographs do provide a fascinating record of village life. There must be scores in Roos curling up in attics and bottom drawers. It would not be possible to print them all. But how interesting it would be to establish a village collection. It would need several albums to accommodate it. Any volunteers to act as organiser? Meanwhile, any more old photos would be welcome for the Newsletter, both of people and of local views and buildings.

SINS OF OMISSION

Predictably, last month's Newsletter, in the list of groups and activities, failed to include them all. Apologies are due for omitting the following.

DARBY AND JOAN CLUB

Meetings are held fortnightly on Wednesdays at 2.00 p.m. starting on 4th September: in the Community Hall, Eastfield Estate. (Warden: Mrs. Olive Ferguson).

Whist Drives are run every Tuesday, organised by Mrs. Margaret Hoe, 16 Pilmar Lane.

Leader

Mrs. Eileen Donkin, West Lea,
Rectory Road. (70086)

Assistant Leader

Mrs. Doris Burn, Millfield,
Rectory Road. (70396)

Secretary/Treasurer

Mrs. Beatrice Stanley,
5 Chestnut Garth. (70596)

ALL SAINTS' CHURCH BELLRINGERS

Eight or nine keen ringers have started learning the art from scratch. The aim is to develop their skills to enhance the quality of church services. Practices are held on weekday evenings. Further details from the Rector (70362).

PARISH COUNCIL

The next Parish Council Meeting will be held in the Memorial Institute on Monday, 9th September at 7.30 p.m. An Agenda will be posted in advance on the Parish Notice Board. Members of the public are very welcome to attend.

COMING EVENTS COLUMN

Holidays and other preoccupations have no doubt prevented local secretaries from supplying details of their coming events. Details of events for inclusion in the October Newsletter should be submitted in good time - preferably by the third Monday of the month, i.e. by 16th September.

Other items will be very welcome : suggestions for features, articles, letters raising local issues, and so on.

DISTRIBUTION

I am grateful to Mrs. Pat Cheeseman and Mrs. Margaret Payne for undertaking to deliver the Newsletter to houses at North End and down Rectory Road as far as Hodgson Lane. Also to Mrs. Connie Farrington for offering to deliver copies in Elm Garth. Will someone offer to help elsewhere?-

Pilmar Lane
Main Street

Rectory Road down to The Elms
South End

Many hands make light work. Help!
Offers to : Leslie Helliwell, Lamb Lane (70291)